

**FINEST QUALITY**

*Union Special*<sup>®</sup>  
LEWIS • COLUMBIA

**INDUSTRIAL  
SEWING  
MACHINES**

**STYLES**

**39500FN**

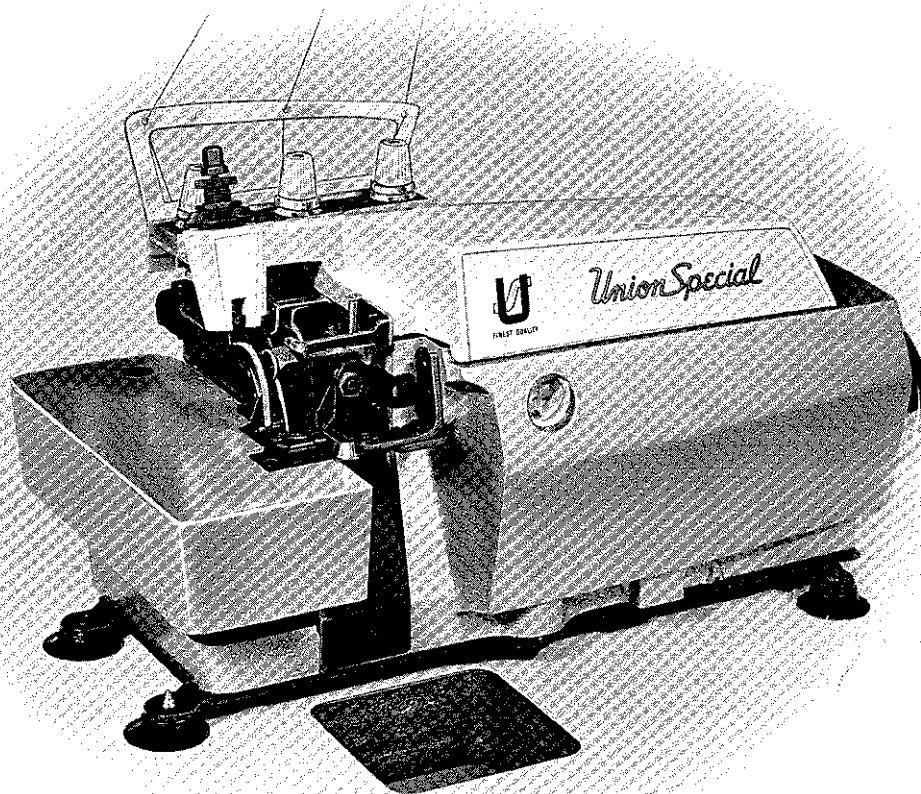
**39500FV**

**39500FX**

**39500GP**

**39500GU**

**39500JX**



**CLASS 39500**

**CATALOG  
No.  
103FN**

**HI-STYLED HIGH SPEED  
THREE THREAD PLAIN FEED  
OVERSEAMING MACHINES**

*Union Special* **MACHINE COMPANY**  
**CHICAGO**

Catalog No. 103 FN  
(Supplement to Catalog No. 103 FJ)

INSTRUCTIONS  
FOR  
ADJUSTING AND OPERATING

LIST OF PARTS

CLASS 39500

Styles

39500 FN	39500 GP
39500 FV	39500 GU
39500 FX	39500 JX

First Edition

Copyright 1967  
By  
Union Special Machine Co.  
Rights Reserved in All Countries

*Union Special*  
**MACHINE COMPANY**  
INDUSTRIAL SEWING MACHINES  
**CHICAGO**

August, 1967

Printed in U.S.A.

## IDENTIFICATION OF MACHINES

Each Union Special machine is identified by a Style number on a name plate on the machine. Style numbers are classified as standard and special. Standard Style numbers have one or more letters suffixed, but never contain the letter "Z". Example: "Style 39500 FN". Special Style numbers contain the letter "Z". When only minor changes are made in a standard machine, a "Z" is suffixed to the standard Style number. Example: "Style 39500 FNZ".

Styles of machines similar in construction are grouped under a Class number which differs from the Style number in that it contains no letters. Example: "Class 39500".

## APPLICATION OF CATALOG

This catalog is a supplement to Catalog No. 103 FJ and should be used in conjunction therewith. Only those parts used on Styles 39500 FN, FV, FX, GP, GU and JX, but not on Style 39500 FJ are illustrated and listed at the back of this catalog. On the page opposite the illustration will be found a listing of the parts with their part numbers, description and the number of pieces required. Numbers in the first column are reference numbers only, and merely indicate the position of that part in the illustration. Reference numbers should never be used in ordering parts. Always use the part number listed in the second column.

This catalog applies specifically to the standard Styles of machines as listed herein. It can also be applied with discretion to some Special Styles of machines in Class 39500. References to directions, such as right, left, front, back, etc., are given from the operator's position while seated at the machine. Operating direction of handwheel is away from operator.

## STYLES OF MACHINES

Hi-Styled High Speed Single Curved Blade Needle, Two Looper, Three Thread, Overseaming Machine. Plain Feed, Trimming Mechanism with Spring Pressed Lower Knife, Automatic Lubricating System.

39500 FN Medium to heavy duty machine for overseaming pants, jackets, snow suits, garment pockets and similar operations on medium to heavy weight materials. Seam specification 504-SSa-1; standard seam width  $3/16$  inch; stitch range 8-20 per inch; cam adjusted feed. Maximum recommended speed 6500 R.P.M.

39500 FV Medium to heavy duty machine for turned edge seaming and straight over- edging without cord on rayon bedspreads, bed blankets, towels, wiping cloths and other articles made from fabrics that fray readily. Seam Specification 504-EFe-1 (inverted); standard seam width  $3/16$  inch; stitch range 7-20 per inch; cam adjusted feed. Maximum recommended speed 6500 R.P.M.

39500 FX Medium to heavy duty machine for simultaneously attaching right pants flies and zipper tapes to pants fronts; also attaching zippers to right flies only and similar operations. Seam specification 504-SSa-1 or SSj-1; standard seam width  $3/8$  inch; stitch range 6-16 per inch; cam adjusted feed. Maximum recommended speed 6500 R.P.M.

39500 GP Light to medium duty machine for serging and trimming light, medium and heavy weight trousers and similar garments. Seam specification 504-EFd-1; standard seam width  $3/16$  inch; stitch range 4-10 per inch; cam adjusted feed. Maximum recommended speed 7000 R.P.M.



## STYLES OF MACHINES (Continued)

39500 GU Light to medium duty machine for simultaneously attaching zippers with sliders and staples already in place (and overedge the facings) to pants flies, skirts, jackets and similar garments. Seam specification 504-SSa-1; standard seam width 3/16 inch; stitch range 4-10 per inch; cam adjusted feed. Maximum recommended speed 7000 R. P. M.

39500 JX Medium to heavy duty machine for simultaneously attaching right pants flies and zipper tapes to pants fronts of durable press material; also attaching zippers to right flies only and similar operations on durable press material. Seam specification 504-SSa-1 or SSj-1; standard seam width 3/8 inch; stitch range 6-16 per inch; cam adjusted feed. Maximum recommended speed 6500 R. P. M.

### OILING

CAUTION! Oil was drained from machine when shipped, so reservoir must be filled before beginning to operate. Oil capacity of Class 39500 is six ounces. A straight mineral oil of a Saybolt viscosity of 200 to 250 seconds at 100° Fahrenheit should be used.

Machine is filled with oil at spring cap in top cover. Oil level is checked at sight gauge on front of machine. Red bulb on oil level indicator should show between gauge lines when machine is stationary.

Machine is automatically lubricated. No oiling is necessary, other than keeping main reservoir filled. Check oil daily before the morning start; add oil as required.

The drain plug screw is located at back of machine near bottom edge of base. It is a magnetic screw designed to accumulate possible foreign materials which may have entered the crank case. It should be removed and cleaned periodically.

### NEEDLES

Each Union Special needle has both type and size number. The type number denotes the kind of shank, point, length, groove, finish and other details. The size number, stamped on the needle shank, denotes largest diameter of blade, measured in thousandths of an inch, midway between shank and eye. Collectively, type and size number represent the complete symbol which is given on the label of all needles packaged and sold by Union Special.

Class 39500 machines use a curved blade needle. The standard recommended needle for the machines covered in this catalog is Type 154 GAS. Below is the description and sizes available of the recommended needle.

<u>Type No.</u>	<u>Description and Sizes</u>
154 GAS	Round shank, round point, curved blade, standard length, single groove, struck groove, spotted, chromium plated and is available in sizes 022, 025, 027, 029, 032, 036, 040, 044, 049, 054.

To have needle orders promptly and accurately filled, an empty package, a sample needle, or the type and size number should be forwarded. Use description on label. A complete order would read: "1000 Needles, Type 154 GAS, Size 040".

Selection of proper needle size is determined by size of thread used. Thread should pass freely through needle eye in order to produce a good stitch formation.

## NEEDLES (Continued)

Success in the operation of Union Special machines can be secured only by use of needles packaged under our brand name, *Union Special* which is backed by a reputation for producing highest quality needles in materials and workmanship for more than three-quarters of a century.

## CHANGING NEEDLES

Release pressure on presser foot by turning presser foot release bushing (AG) Fig. 1) and swing presser arm (U) out of position. Turn handwheel in operating direction until needle is at its lowest point of travel. Using hexagonal socket wrench No. 21388 AU, furnished with machine, loosen needle clamp nut about 1/4 turn. Again turn handwheel until needle is at high position; withdraw needle.

To replace needle, leave needle holder at high position and, with the flat to the left, insert needle in holder until it rests against stop pin. Keeping needle in this position, turn handwheel until holder is again at its low point of travel; then tighten nut. Return presser arm (U) to position; re-lock presser foot release bushing (AG).

## THREAD STAND

After thread comes from cones on cone support (A, Fig. 1), it is brought up through back hole of thread eyelet (B), then down through the front hole of thread eyelet. Next it is threaded through the upper holes of tension thread guide (C) from front to back and then through the lower holes from back to front. It should be noted that the lower looper thread is threaded through the tension thread guide (C), first through the upper hole back to front, second through the middle hole front to back and third through the lower hole back to front. All threads then continue between the tension discs (J), through tension post slot (K) in tension post (G) and on through front thread guide (M).

## THREADING

Only parts involved in threading are shown in threading diagram (Fig. 1). Parts are placed in their relative positions for clarity.

It will simplify threading this machine to follow recommended sequence of threading lower looper first, upper looper second, and needle third.

Before beginning to thread, swing cloth plate open, turn handwheel in operating direction until needle (X) is at high position, release pressure on presser foot by turning presser foot release bushing (AG); and swing presser arm (U) out of position.

Be sure threads, as they come from the tension thread guide, are between tension discs (J) and in diagonal slots (K) in tension posts (G).

## TO THREAD LOWER LOOPER

Double end of thread and lead it through both eyes of lower looper thread eyelet (R, Fig. 1) from right to left. Note: thread must pass in front of looper thread pull-off (AF). Lead thread behind fabric guard (S) and through eyelet hole of frame looper thread guide (T). Turn handwheel in operating direction until heel of lower looper (V) is all the way to the left; then thread through both eyes from left to right. Left eye of lower looper can be threaded easily if tweezers are in left hand.

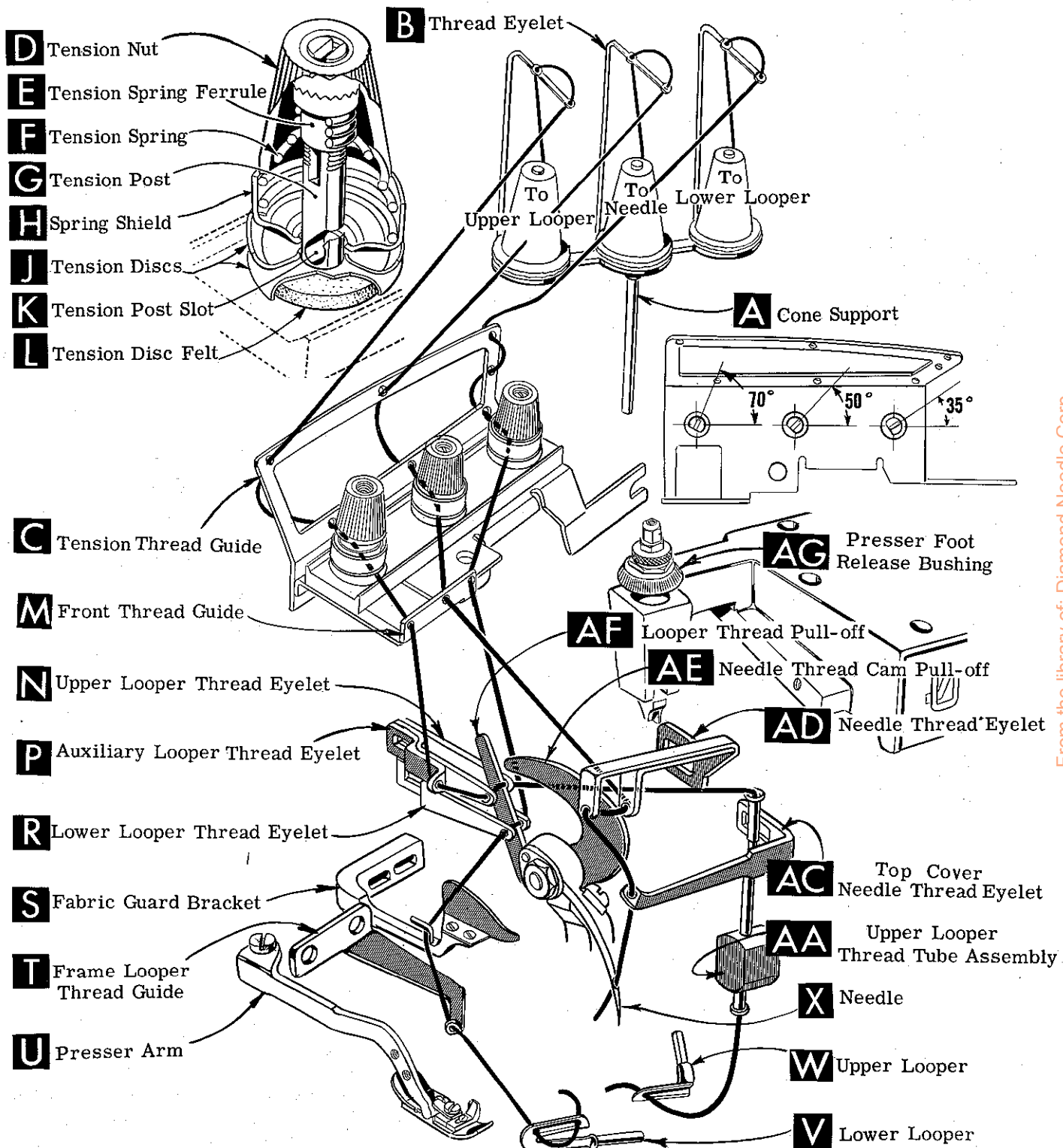


Fig. 1

## TO THREAD UPPER LOOPER

Turn handwheel until point of upper looper (W) is all the way left. Lead thread through auxiliary looper thread eyelet (P) from back to front, then through both eyes of upper looper thread eyelet (N) from left to right. Note: thread must pass in front of looper thread pull-off (AF). After pulling up upper looper thread tube assembly (AA), lead thread under neck of top cover casting and down through thread tube assembly (AA). Pull thread out bottom of tube; push tube down, then insert thread through upper looper eye from front to back.

**CAUTION!** Be sure upper looper thread is under lower looper thread when passing from tube assembly to upper looper eye.

## TO THREAD THE NEEDLE

Turn handwheel in operating direction until needle (X, Fig. 1) is at its highest position. Insert needle thread from right to left, through both eyes of needle thread eyelet (AD), under neck of top cover casting; then down through hole in top cover needle thread eyelet (AC). Thread needle from front.

## THREAD TENSION

The amount of tension of needle and looper threads is regulated by three knurled tension nuts (D, Fig. 1). Tension on threads should be only enough to secure proper stitch formation.

## PRESSER FOOT PRESSURE

Sufficient presser foot pressure to feed work uniformly should be maintained. Should it be necessary to increase or decrease amount of pressure on presser foot, loosen lock nut (A, Fig. 2) and turn adjusting screw (B). Adjusting screw has a right hand thread so tightening increases pressure, loosening decreases pressure. When pressure adjusting screw (B) has been properly set, tighten lock nut (A). With presser foot resting on throat plate, position locking nut (C) so that its under surface is approximately  $1/32$  inch to  $1/16$  inch from the top surface of adjusting screw (B). Set cap (D) against locking nut (C).

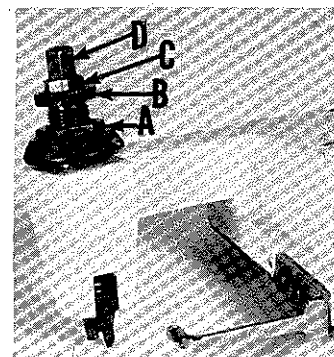


Fig. 2

## FEED ECCENTRICS

Feed eccentrics used in these machines have been selected to produce approximately 7 stitches per inch on Styles 39500 GU and JX, 8 stitches per inch on Style 39500 FV, 10 stitches per inch on Styles 39500 GP and FX, and 12 stitches per inch on Style 39500 FN. It will be noted that the part number of the feed eccentric on Style 39500 FN is No. 39540 B-12. Minor number of the part symbol indicates approximately the number of stitches produced when using that eccentric. Unless otherwise specified, machine will be shipped with the eccentric to produce the number of stitches as outlined above.

Following stitch number feed eccentrics are available under No. 39540 B-4, 5, 6, 7, 8, 9, 10, 11, 12, 13, 14, 15, 16, 18, 20, 22, 24, 26, 28, 30, 32, 34, 36, 40. Only two eccentrics are supplied with each machine. Additional eccentrics may be ordered separately. To order an eccentric, use No. 39540 B with a minor number suffixed to indicate number of stitches desired. Example: "39540 B-12".



## ASSEMBLING AND ADJUSTING SEWING PARTS

Before assembling and adjusting sewing parts, remove cloth plate, fabric guard, chip guard, upper knife assembly, lower knife holder assembly, then follow this suggested sequence:

### SETTING THE NEEDLE

With throat plate assembled in position, needle should center in the front end of needle slot. When needle is at high position, needle point should be set  $\frac{1}{2}$  inch above throat plate (A, Fig. 3) for Style 39500 FN;  $\frac{15}{32}$  inch for Styles 39500 FV, FX, GU and JX; and  $\frac{33}{64}$  inch for Style 39500 GP. To align needle or set the height above the throat plate, move needle driving arm (B, Fig. 3) by loosening clamp screw (C). Remove throat plate.

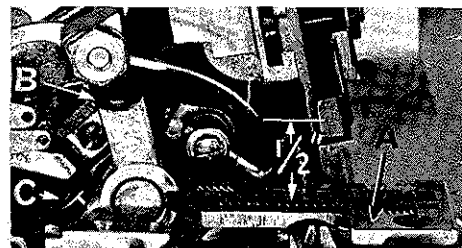


Fig. 3

If needle thread cam pull-off (A, Fig. 4) overlaps looper thread pull-off (B), separate by moving looper thread pull-off back. When retightening looper pull-off screw, be sure to take up end play in needle driving arm.

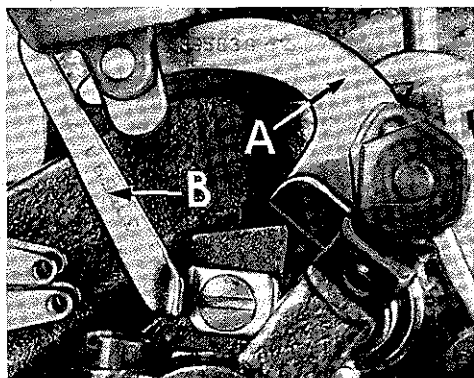


Fig. 4

At this point, insert lower looper (A, Fig. 5) into bar (B). With lower looper at left end of its stroke, set looper point  $\frac{1}{8}$  inch from center of needle (Fig. 5), using looper gauge No. 21225- $\frac{1}{8}$  for Styles 39500 FN, FV, GP and GU. Set looper point  $\frac{3}{32}$  inch from center of needle (Fig. 5), using looper gauge No. 21225- $\frac{3}{32}$  for Styles 39500 FX and JX. Do not have lower looper deflecting needle. Tighten nut (C).

Now assemble the main feed dog.

### SETTING THE REAR NEEDLE GUARD

Set rear needle guard (A, Fig. 6) as high as possible, without interfering with either lower looper or movement of lower knife holder, but still in position to deflect needle forward .002-.004 inch. Screw (B) is used to set rear needle guard. Make sure there is no interference between rear needle guard and lower looper.

### SETTING THE LOWER LOOPER

Now finish lower looper adjustment. As lower looper moves to the right, its point should be set into the needle scarf (A, Fig. 7) until the needle springs forward from rear guard surface another .002-.004 inch.

### SETTING THE FRONT NEEDLE GUARD

Assemble front needle guard (C, Fig. 6). When lower looper is springing needle off back guard, set front needle guard as close as possible to needle without touching. Screw (D) is used to adjust and set front needle guard. After this setting make sure there is no interference between needle guards and main feed dog.

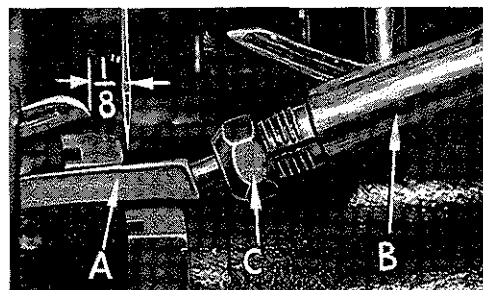


Fig. 5



## SETTING THE UPPER LOOPER

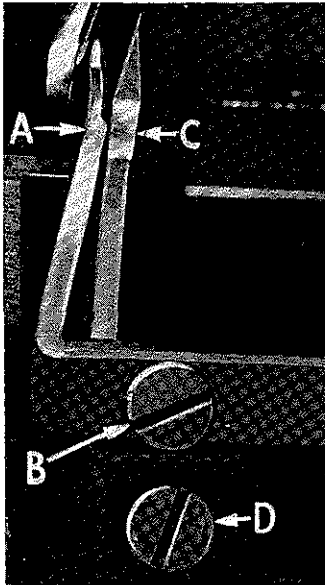


Fig. 6

Insert upper looper (A, Fig. 8) in its holder. Screw (B, Fig. 8) holds upper looper in its holder, and permits it to be pushed in or out or turned around its shank. Insert upper looper holder into upper looper shaft, if it is not already in place. Screw (C, Fig. 8) on clamp holds the upper looper holder in the shaft. Locate upper looper in its holder so that the shank extends  $\frac{1}{16}$  to  $\frac{3}{32}$  inch beyond holder (Fig. 8), for Styles 39500 FN, FV, FX, GU and JX;  $\frac{1}{32}$  to  $\frac{1}{16}$  for Style 39500 GP.

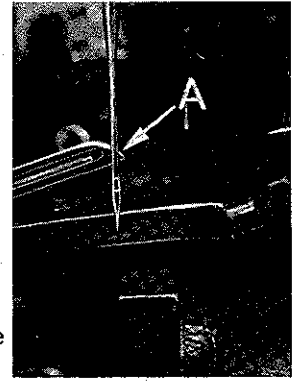


Fig. 7

When the upper looper is at the right end of its stroke upper looper holder should be set to position upper looper shank about vertical on Styles 39500 FN, FV, FX and JX (Fig. 8). On Styles 39500 GP and GU the upper looper holder should be set to position the upper looper shank back of vertical. Be sure, on all Styles, there is a clearance between heel of looper and the casting. By adjusting looper holder in or out of upper looper shaft and by turning the looper around its shank, set upper looper point to cross lower looper to the left of the lower looper eye with .002 to .004 clearance (Fig. 9).

As the upper looper moves toward the top of its stroke, the heel of the upper looper should pass behind the lower looper head with  $\frac{1}{32}$  to  $\frac{1}{16}$  inch clearance.

Next, turn handwheel until looper is at the left end of its travel; check dimensions of upper looper point with respect to needle and throat plate (Fig. 10). If resetting is necessary, do it by moving the upper looper holder (A, Fig. 10). Figure 10 represents the dimensional setting for Style 39500 FN.

NOTE: For Styles 39500 FV, FX and JX the setting dimensions are  $\frac{9}{64}$  and  $\frac{15}{32}$  inch. For Style 39500 GP the settings are  $\frac{5}{32}$  and  $\frac{1}{2}$  inch, and for Style 39500 GU the settings are  $\frac{5}{32}$  and  $\frac{29}{64}$  inch. For example, dimension  $\frac{1}{2}$  inch is increased by turning upper looper holder counterclockwise, looking from left end of machine; dimension  $\frac{9}{64}$  inch is increased by pulling upper looper holder to the left, out of upper looper shaft. After these changes are made, it may be necessary to turn upper looper around its shank slightly to maintain the condition shown in Fig. 9.

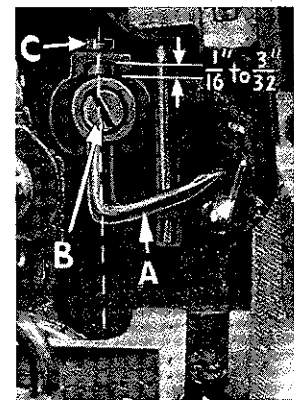


Fig. 8

When the correct setting is obtained, it can be checked quickly as follows: As the upper looper is moving to the right and the upper looper eye centers on the needle, the eyes of the upper looper and needle should align exactly (Fig. 11) for Styles 39500 FN, FV, FX, GP and JX. For Style 39500 GU, when the upper looper eye centers on the needle, the bottom of the needle eye should be about level with the top surface of the looper.

Check setting to avoid interference between upper looper and needle on needle downstroke. If needle rubs the back of upper looper, pull looper out of its holder slightly and rotate looper a short distance counterclockwise, looking from left end of machine. Reset to maintain dimensions of Figs. 9, 10, 11.

## SETTING THE FEED DOGS

Assemble chaining feed dog to main feed dog (A, B, Fig. 12). Main feed dog should be levelled with respect to the throat plate by rotating feed tilting adjusting pin (C). This pin raises or lowers the back end of the feed bar.

The feed dogs should be set level at the time teeth first appear above the throat plate. Screw (D) locks feed tilting adjusting pin in place. With the feed dogs at their highest point of travel, the top of the teeth on the main feed dog (A) should be  $\frac{3}{64}$  inch above the throat plate. Now set chaining feed dog teeth (B) flush with the top of throat plate, for Styles 39500 FN, FX, FP, GU and JX. On Style 39500 FV, the chaining feed dog teeth should be set to the same height as the main feed dog teeth.



Fig. 9

## SETTING THE LOWER KNIFE

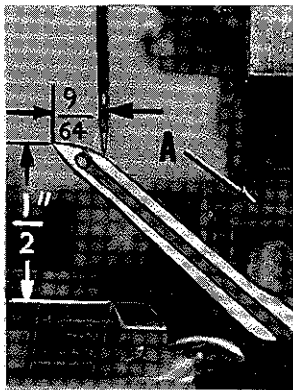


Fig. 10

Replace lower knife holder assembly. Lower knife (A, Fig. 13) should be set with cutting edge flush with throat plate surface. Adjustments are made with hexagonal head screw which holds lower knife. Lower knife is spring pressed against upper knife, so no lateral adjustment is necessary when width of trim is changed.

Lower knife may be secured in any position by tightening screw (B) and locking nut (C) against support bracket. Because screw (B) also serves as latch pin for the cloth plate latch spring, it should always be locked with nut (C) even when screw is not tightened against lower knife holder.

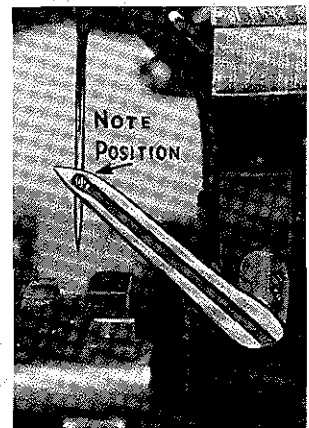


Fig. 11

## SETTING THE UPPER KNIFE

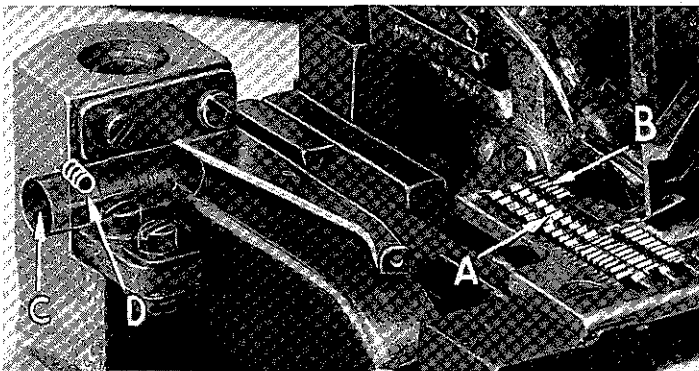


Fig. 12

Replace upper knife assembly. Clamp upper knife (D, Fig. 13) in position, setting nut (E) to hold clamp (F) in its most clockwise position against upper knife. At bottom of its stroke, front cutting edge of upper knife should extend not less than  $\frac{1}{64}$  inch below cutting edge of lower knife. The chain guard (G) should be set down against the upper knife and slightly back from the cutting edge.

After upper knife has been set for proper width of trim, screw (H) should be tightened to lock upper knife holding block (J) in place. This will simplify resetting when upper knife is replaced.

## SETTING THE STITCH LENGTH

Length of stitch is determined by the feed eccentric used in machine. Note that the part number of the feed eccentric for Styles 39500 GU and JX is No. 39540 B-7; for Style 39500 FV the part number is No. 39540 B-8; for Styles 39500 GP and FX the part number is No. 39540 B-10; and for Style 39500 FN the part number is No. 39540 B-12.

In assembling the feed eccentric (A, Fig. 14), be sure the hub and oil groove is to the left. Beveled edge of feed eccentric spacer (B) should also be to the left side, so the undercut on the spacer will be over the hub on the feed eccentric. Be careful not to damage shaft or key.

Tighten nut (C) securely.

To change feed eccentrics, remove nut (C), washer (D) and feed eccentric spacer (B). Turn handwheel in operating direction until key slot in eccentric is toward the front. Using hooked eccentric extractor (E), supplied with machine, reach behind eccentric as shown and withdraw eccentric. It may be necessary to move handwheel back and forth slightly during extraction.

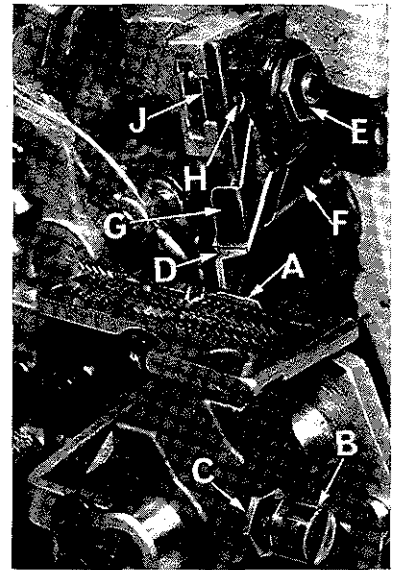


Fig. 13

## SETTING THE PRESSER FOOT

Assemble the presser foot to presser arm. With needle in high position, swing presser arm into sewing position and set the presser foot to align needle holes (front and back) and flat on throat plate. The front edge of needle hole in presser foot must be aligned with front edge of needle hole in throat plate. It is also important that the bottom of the presser foot be flat on the throat plate. If necessary, presser foot can be realigned with throat plate slots by shifting the foot lifter lever shaft (H, Fig. 15). To move the shaft, loosen collar screws (B, Fig. 15) and clamp screw (G) and then shift the foot lifter lever shaft to the left or right as required. Retighten collar screws and clamp screw.

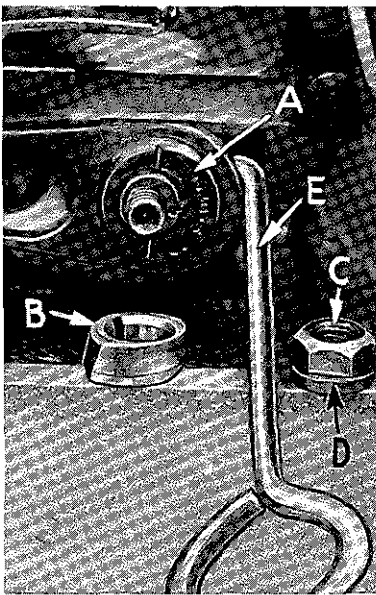


Fig. 14

free motion of foot lifter lever before the presser foot begins to rise. This adjustment should be made with screw (E) and locked with nut (F). Re-assemble the chip guard, fabric guard and cloth plate. To assemble chip guard, turn handwheel until upper knife assembly reaches its highest position.

## STARTING TO OPERATE

Be sure machine is threaded according to threading diagram (Fig. 1, page 6 ). With thread tensions light, set looper thread eyelets (N and R) about horizontal and in the middle of their front to back locations. Operate machine slowly, without presser foot in place, to make sure that chain forms and moves off the tongue freely. Swing presser foot into position, insert material, and sew slowly.



## NEEDLE THREAD CONTROL

While sewing on material, check needle thread control as follows: Usually all needle thread is drawn on needle down stroke. At top of needle stroke, thread should be just tight enough to feed chain off stitch tongue. Stitch tends to pull down slightly if excessive thread is pulled on the up stroke. With needle at bottom of stroke, position needle thread eyelet (AD, Fig. 1) so that needle thread cam pull-off (AE) just contacts needle thread.

On all Styles, it is desirable to adjust the needle thread pull-off eyelet well-forward (toward the operator) to delay, slightly, the tightening of the needle thread.

## LOWER LOOPER THREAD CONTROL

With material under presser foot, set lower looper thread eyelet (R, Fig. 1) back far enough so thread is a little slack when looper thread pull-off (AF) reaches its most rearward position. Looper thread pull-off (AF) is set about 1/8 inch distance behind needle thread cam pull-off (AE). Frame looper thread guide (T) should be set with its eyelet approximately 1/8 inch to right of lower looper (V) heel eyelet at the time lower looper is at extreme left end of its travel.

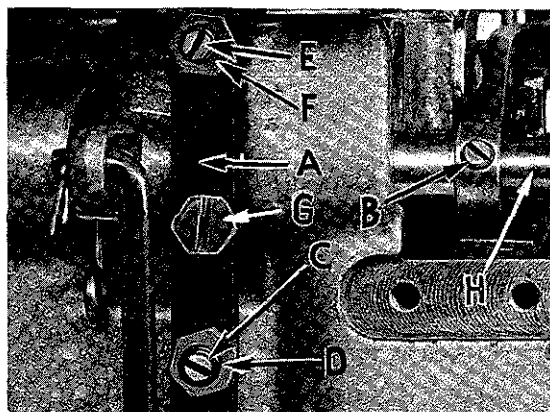


Fig. 15

While sewing on material, check drawing off of looper thread as follows: A portion of lower looper thread should be drawn through the tension before lower looper thread comes off upper looper. To increase amount of thread drawn through the tension while lower looper thread is on upper looper, move lower looper thread eyelet (R) down, keeping the same amount of pull-off action.

## UPPER LOOPER THREAD CONTROL

Before proceeding to adjust upper looper thread eyelet (N, Fig. 1) balance all three tensions to give a normal appearing stitch. Moderate change in these tensions will not markedly effect the purl.

During needle down stroke, forward stroke of looper thread pull-off (AF) will draw upper looper thread through the tension. When normal amount of looper thread is drawn, upper looper thread will have almost all slack taken up as looper thread pull-off reaches its most rearward position.

## POSITIONING THE PURL

To move the purl more under the edge, both looper thread eyelets (N and R, Fig. 1) should be raised, keeping the same amount of pull-off. Usually it is better to have slightly more pull-off upper thread than on lower thread.

If it becomes necessary to move looper thread pull-off (AF), be sure to take up all end play in needle drive shaft before tightening. If upper looper is located so that it is higher over throat plate than recommended in Fig. 10, the purl will tend to form near top edge. If upper looper is too low, the purl will form nearer bottom edge.



## THREAD TENSIONS

The needle thread tension required is a function of needle thread and material being sewn. In general, lower looper thread tension should be set as high as possible without causing needle thread to be pulled down. Upper looper thread tension should be increased as long as the elasticity of the chain increases, or until the purl is pulled too far over the top.

## TERMS

Prices are net cash and subject to change without notice. All shipments are forwarded f. o. b. shipping point. Parcel post shipments are insured unless otherwise directed. A charge is made to cover postage and insurance.

## USE GENUINE NEEDLES AND REPAIR PARTS

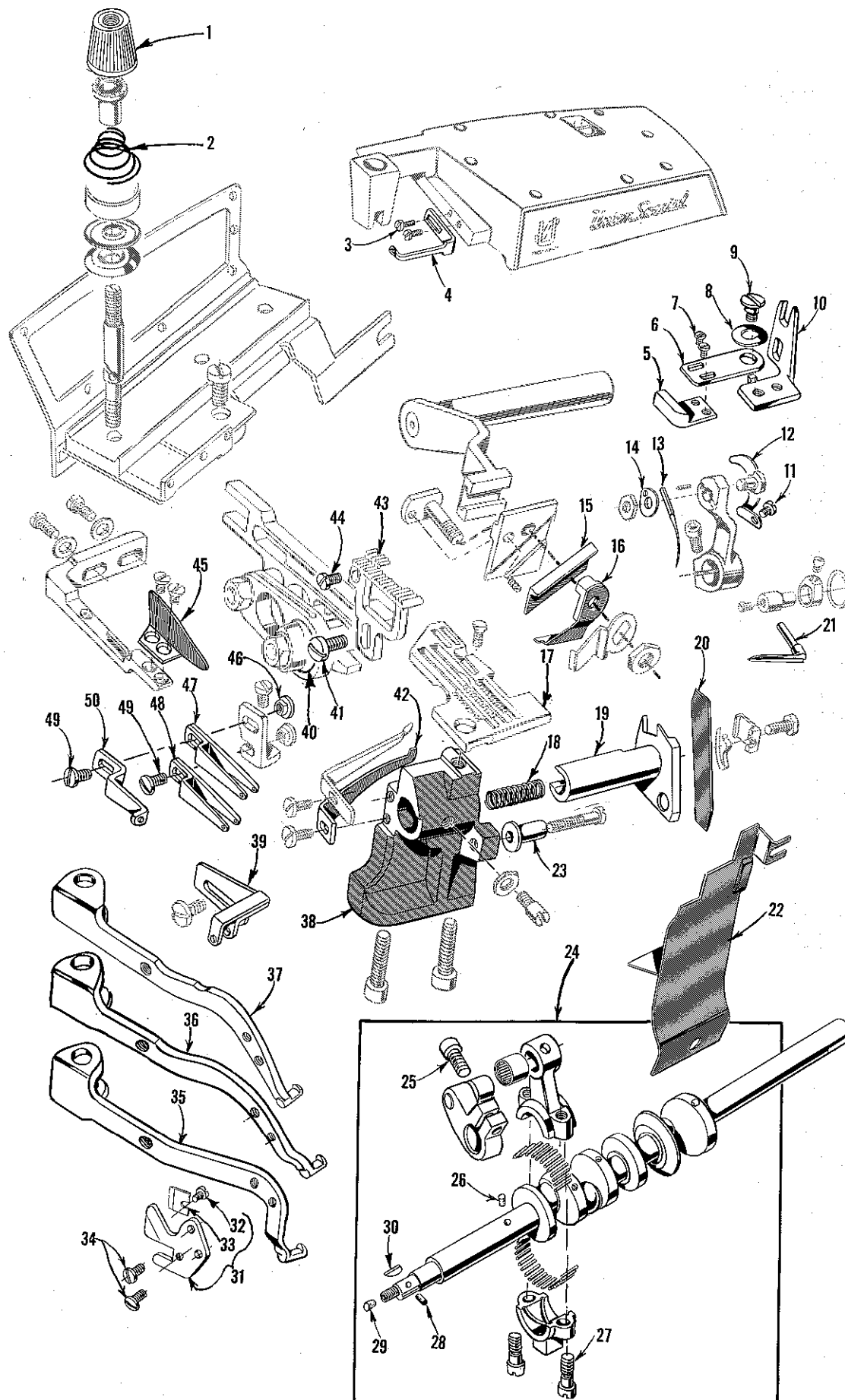
Success in the operation of these machines can be secured only with genuine Union Special Needles and Repair Parts as furnished by the Union Special Machine Company, its subsidiaries and authorized distributors. They are designed according to the most scientific principles, and are made with utmost precision. Maximum efficiency and durability are assured.

Genuine needles are packaged with labels marked *Union Special*. Genuine repair parts are stamped with the Union Special trade mark. Each trade mark is your guarantee of the highest quality in materials and workmanship.

## IDENTIFYING PARTS

Where the construction permits, each part is stamped with its part number. On some of the smaller parts, and on those where construction does not permit, an identification letter is stamped in to distinguish the part from similar ones.

PART NUMBERS REPRESENT THE SAME PART, REGARDLESS OF CATALOG IN WHICH THEY APPEAR.



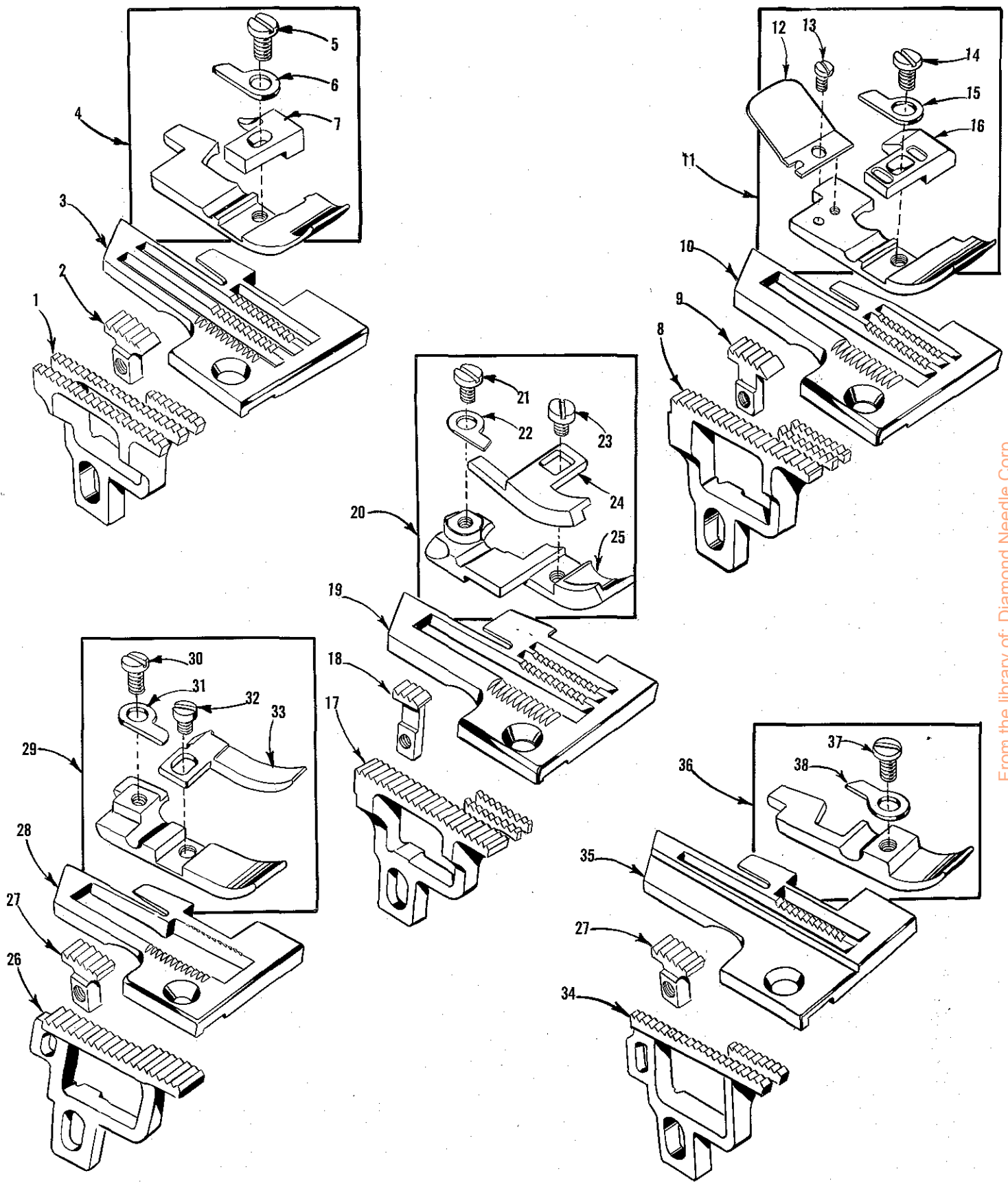
The parts illustrated on pages 14 and 16, and described on this page and page 17 represent the parts that are used on Styles 39500 FN, FV, FX, GP, GU and JX, but not used on Style 39500 FJ.

Unless otherwise specified in the description, the parts are used on all the machine styles covered in this catalog. Those parts shown in phantom views and bearing no reference numbers are common to Styles 39500 FJ, FN, FV, FX, GP, GU and JX.

Use Catalog No. 103 FJ (Style 39500 FJ) for all parts not illustrated or described in this catalog.

Reference numbers that are inside a bracket or box on the picture plates and have indented descriptions, indicate they are components of a complete part or assembly.

Ref. No.	Part No.	Description	Amt. Req.
1	39592 AA	Tension Nut, green, for needle thread -----	1
	39592 AB	Tension Nut, blue, for upper looper thread -----	1
	39592 AC	Tension Nut, red, for lower looper thread -----	1
2	39592 AE-4	Looper Tension Spring, for Styles 39500 FN, FX, GP, GU, JX -----	2
	39592 AE-1	Upper Looper Tension Spring, for Style 39500 FV -----	1
	39592 AE-4	Lower Looper Tension Spring, for Style 39500 FV -----	1
	39592 AE-8	Needle Tension Spring, for Styles 39500 FN, FX, GP, GU, JX -----	1
	39592 AE-5	Needle Tension Spring, for Style 39500 FV -----	1
3	22569 B	Screw, for top cover needle thread eyelet -----	2
4	39563 F	Top Cover Needle Thread Eyelet, for Styles 39500 FN, FX, GP, GU, JX -----	1
	39563 T	Top Cover Needle Thread Eyelet, for Style 39500 FV -----	1
5	39503 A	Edge Guide, for Styles 39500 FX, GP, JX -----	1
6	39503 D	Edge Guide Swinging Arm, for Styles 39500 FX, GP, JX -----	1
7	604	Screw, for edge guide, for Styles 39500 FX, GP, JX -----	2
8	12957 E	Washer, for swinging arm, for Styles 39500 FX, GP, JX -----	1
9	22758 E	Screw, for swinging arm, for Styles 39500 FX, GP, JX -----	1
10	39503 C	Edge Guide Mounting Bracket, for Styles 39500 FX, JP, JX -----	1
11	87 U	Screw, for needle thread pull-off cam, for Styles 39500 FN, FV, FX, JX -----	1
	77 A	Screw, for needle thread pull-off cam, for Styles 39500 GP, GU -----	1
12	39563 G	Needle Thread Pull-off Cam -----	1
13	154 GAS	Needle -----	1
14	39551 A	Needle Clamp Washer -----	1
15	39570	Upper Knife, for Style 39500 FN -----	1
16	39571	Upper Knife Clamp, for Style 39500 FN -----	1
17		Throat Plate (See Page 19) -----	1
18	39550 E	Lower Knife Holder Spring, for Styles 39500 FN, GP, GU -----	1
	39550 P	Lower Knife Holder Spring, for Styles 39500 FV, FX, JX -----	1
19	39550 S	Lower Knife Holder, for Styles 39500 FN, FV, FX, GU, JX -----	1
	39550 U	Lower Knife Holder, for Style 39500 GP -----	1
20	39549	Lower Knife -----	1
21	39508 A	Upper Looper, marked "CC" -----	1
22	39578 U	Chip Guard, for Styles 39500 FN, GP, GU -----	1
	39578 TA	Chip Guard, for Styles 39500 FV, FX, JX -----	1
23	39550 C	Lower Knife Locating Stud, for Styles 39500 FN, GP, GU -----	1
	39550 R	Lower Knife Locating Stud, for Styles 39500 FV, GP, GU -----	1
24	29477 KE	Crankshaft and Needle Driving Arm Crank Assembly, for Styles 39500 FN, FV, FX, JX -----	1
25	22596 E	Screw, for needle driving arm crank -----	1
26	51-228 Blk.	Vent Plug -----	1
27	22587 J	Screw, for needle driving arm connecting rod -----	2
28	30-92 Blk.	Wood Plug -----	1
29	CO67 E	Cork Plug -----	1
30	39541 A	Feed Driving Eccentric Key -----	1
31	39556 M	Chain Cutting Knife, for Styles 39500 FX, GP, GU, JX -----	1
32	22798	Screw, for chain cutting blade -----	1
33	39556 L	Chain Cutting Blade -----	1
34	605	Screw, for chain cutting knife -----	2
35	39556 AU	Presser Arm, for Style 39500 GU -----	1
36	39556 D	Presser Arm, for Styles 39500 FX, GP, JX -----	1
	39556 F	Presser Arm, for Style 39500 FN -----	1
37	39556 E	Presser Arm, for Style 39500 FV -----	1
38	39580 A	Throat Plate Support Bracket, for Styles 39500 FN, FV, FX, GU, JX -----	1
	39580 AE	Throat Plate Support Bracket, for Style 39500 GP -----	1
39	39563 H	Needle Thread Eyelet, for Styles 39500 FN, FX, GP, GU, JX -----	1
	39563 U	Needle Thread Eyelet, for Style 39500 FV -----	1
40	39540 B-7	Feed Driving Eccentric, for Styles 39500 GU, JX -----	1
	39540 B-8	Feed Driving Eccentric, for Style 39500 FV -----	1
	39540 B-10	Feed Driving Eccentric, for Styles 39500 FX, GP -----	1
	39540 B-12	Feed Driving Eccentric, for Style 39500 FN -----	1
41	22528	Screw, for main feed dog -----	1
42	39525	Needle Guard, front, for Styles 39500 FN, FV, FX, GU, JX -----	1
	39525 L	Needle Guard, front, for Style 39500 GP -----	1
43		Feed Dog (See Page 19) -----	1
44	22 KH	Screw, for chaining feed dog, for Styles 39500 FN, FV, FX, JX -----	1
	22768 B	Screw, for chaining feed dog, for Styles 39500 GP, GU -----	1
45	39578 M	Fabric Guard, for Styles 39500 GU -----	1
	39578 R	Fabric Guard, for Styles 39500 FN, FV, GP -----	1
	39578 S	Fabric Guard, for Styles 39500 FX, JX -----	1
46	43139 A	Nut, for looper thread eyelet screw -----	2
47	39568 L	Upper Looper Thread Eyelet, for Styles 39500 FN, FX, GP, GL, JX -----	1
	39568 T	Upper Looper Thread Eyelet, for Style 39500 FV -----	1
48	39568 B	Lower Looper Thread Eyelet, for Styles 39500 FN, FX, GP, GL, JX -----	1
	39568 S	Lower Looper Thread Eyelet, for Style 39500 FV -----	1
49	376 A	Screw, for looper thread eyelets -----	2
50	39568 E	Auxiliary Looper Thread Eyelet, for Styles 39500 FN, FX, GD, GL, JX -----	1
	39568 U	Auxiliary Looper Thread Eyelet, for Style 39500 FV -----	1





FEED DOGS, THROAT PLATES AND PRESSER FEET

<u>Ref. No.</u>	<u>Part No.</u>	<u>Description</u>	<u>Amt. Req.</u>
1	39505 N	Main Feed Dog, 16 t.p.i., for Style 39500 FN -----	1
2	39505 U	Chaining Feed Dog, marked "H", 16 t.p.i., for Style 39500 FN -----	1
3	39524 N	Throat Plate, marked "AH-3/16", for Style 39500 FN -	1
4	39520 N	Presser Foot, for Style 39500 FN -----	1
5	22768 B	Screw, for stitch tongue and hinge spring -----	1
6	39530	Hinge Spring -----	1
7	39597 N	Stitch Tongue, marked "DZ" -----	1
8	39505 V	Main Feed Dog, 16 t.p.i., for Style 39500 FV -----	1
9	39505 L	Chaining Feed Dog, marked "V", 16 t.p.i., for Style 39500 FV -----	1
10	39524 V	Throat Plate, marked "AP", for Style 39500 FV -----	1
11	39520 V	Presser Foot, for Style 39500 FV -----	1
12	39530 H	Chain Shield -----	1
13	22738	Screw, for chain shield -----	1
14	22738 B	Screw, for stitch tongue and hinge spring -----	1
15	39530	Hinge Spring -----	1
16	39597 V	Stitch Tongue, marked "ED" -----	1
17	39505 X	Main Feed Dog, 16 t.p.i., for Style 39500 FX -----	1
	39505 AE	Main Feed Dog, 22 t.p.i., for Style 39500 JX -----	1
18	39505 M	Chaining Feed Dog, marked "Y", 16 t.p.i., for Style 39500 FX -----	1
	39505 AF	Chaining Feed Dog, marked "CJ", 22 t.p.i., for Style 39500 JX -----	1
19	39524 X	Throat Plate, marked "AR", for Style 39500 FX-----	1
	39528 X	Throat Plate, marked "BM", for Style 39500 JX-----	1
20	39520 X	Presser Foot, for Styles 39500 FX, JX -----	1
21	87 U	Screw, for hinge spring -----	1
22	39530	Hinge Spring -----	1
23	28	Screw, for edge guide -----	1
24	39530 J	Edge Guide, marked "A"-----	1
25	39530 K	Presser Foot Bottom, marked "M" -----	1
26	39505 J	Main Feed Dog, 16 t.p.i., for Style 39500 GP -----	1
27	39505 K	Chaining Feed Dog, marked "K", 16 t.p.i., for Style 39500 GP, GU -----	1
28	39524 J	Throat Plate, for Style 39500 GP -----	1
29	39520 L	Presser Foot, for Style 39500 GP -----	1
30	22768 B	Screw, for hinge spring -----	1
31	39530	Hinge Spring -----	1
32	22819	Screw, for stitch tongue -----	1
33	39597 L	Stitch Tongue, marked "DW" -----	1
34	39505 AU	Main Feed Dog, 16 t.p.i., for Style 39500 GU -----	1
35	39524 AU	Throat Plate, marked "BG", for Style 39500 GU -----	1
36	39520 AU	Presser Foot, for Style 39500 GU -----	1
37	22768 B	Screw, for hinge spring -----	1
38	39530 G	Hinge Spring -----	1



**FINEST QUALITY**

# Union Special®

LEWIS and COLUMBIA

**INDUSTRIAL SEWING MACHINES**



## SALES OFFICES AND REPRESENTATIVES

†Handle Union Special and Columbia only.

‡Handle Lewis and Columbia only.

All others handle Union Special, Lewis and Columbia with certain exceptions.

### UNITED STATES

ALABAMA, BIRMINGHAM, 732-84th Street, South, Lloyd D. Baldwin, Tel. 833-9904.

ALABAMA, MONTGOMERY 7, 1959 Amelia Drive, Garnet H. Hamlet, Tel. 265-0942, P.O. Box 7203, Larry Crisler, Tel. 265-0942.

ARKANSAS, LITTLE ROCK, P.O. Box 1783, James T. Taylor, Tel. (501) FR 2-2356.

CALIFORNIA, LA PUENTE, 1527 Channelwood Drive, Bill Bayless, Tel. 330-3043.

★CALIFORNIA, LOS ANGELES 21, 1100 E. Pico Blvd., Paul M. Mason, Mgr., Tel. Madison 5-5828.

CALIFORNIA, SAN FRANCISCO 7, 1275 Mission St., Robert J. Vail, Tel. Underhill 1-1580.

‡CALIFORNIA, SAN FRANCISCO 3, Apparel City Sewing Machine Co., 1155 Mission St., Tel. MArket 1-6660.

COLORADO, ARVADA, Casey's Sewing Machine Service, 5719 Reed St., Tel. 424-6630.

CONNECTICUT, DANBURY, 22 Barnum Road, Robert W. Gaines, Tel. 746-3652.

FLORIDA, MIAMI, 2519 N.W. 2nd Ave., Trimco Sewing Equipment, Inc., Tel. 633-1138.

FLORIDA, PLANT CITY, 506 N. Gordon St., James C. Morgan, Tel. 752-1829.

★GEORGIA, ATLANTA, 2120 Plasters Bridge Road, N.E., Merritt M. Ambrose, Mgr., Tel. 875-9237.

GEORGIA, COMMERCE, Lakeview Drive, J. Tom Hanley, Tel. 335-4061.

GEORGIA, DECATUR, 1713 Coventry Road, Joe V. Parker, Tel. 272-4663.

GEORGIA, DUBLIN, 1615 Knox St., John W. Jones, Tel. 272-4663.

GEORGIA, GAINESVILLE, RFD #1, John Bradberry, Tel. Cumming, Ga. 887-4732.

GEORGIA, WINDER, 805 Pinkney, B. D. Smith, Tel. 867-3208.

★ILLINOIS, CHICAGO 10, 400 N. Franklin St., Orville A. Ulrick, Mgr., Tel. 644-6920.

KANSAS, PRAIRIE VILLAGE, 7351 Rosewood, Cleo C. Smith, Tel. HE 2-1705.

KENTUCKY, LOUISVILLE 7, P.O. Box 7261, Raymond E. Hinton, Tel. 587-0042.

LOUISIANA, METAIRIE, 707 Trudeau Drive, Charles Wickersham, Tel. 729-4115.

MARYLAND, BALTIMORE 15, P.O. Box 2505, Ralph B. Foster, Tel. 727-8499.

‡MARYLAND, BALTIMORE 1, J. Dashew, Inc., 417 W. Baltimore St., Tel. LExington 9-1838.

†★MASSACHUSETTS, BOSTON 11, 179 Lincoln St., William E. Palm, Mgr., Tel. Liberty 2-0147.

†MASSACHUSETTS, CANTON, York St., RFD, Roy T. Pedersen, Tel. 828-1412.

†MASSACHUSETTS, TAUNTON, P.O. Box #2 Raynham, Walter P. Godek, Tel. VanDyke 2-6149.

MICHIGAN, DETROIT, John Joyce, Tel. 584-4210.

MINNESOTA, MINNEAPOLIS, 2800 Texas Ave., St. Louis Park 26, Minn., Leonard W. Koehler, Tel. 644-6236.

MISSISSIPPI, JACKSON 3, 327 Eastview St., Jamie A. Boyette, Tel. Floetwood 5-1976, 1717 Capitol Ave., Larry Lancaster, Tel. 354-3080.

MISSISSIPPI, TUPELO, 606 Racove Drive, Bill Haywood, Tel. VI 2-5848.

‡MISSOURI, KANSAS CITY 5, Textile Machinery Co., 915 Broadway, Tel. Victor 2-9558.

MISSOURI, ST. LOUIS 34, 9860 Guthrie Ave., Carl E. McLaughlin, Tel. Chestnut 1-2368, 3940 Shenandoah St., Jerry Hicks.

†NEW HAMPSHIRE, NASHUA, P.O. Box 257, Herman E. Haberman Jr., Tel. Tuxedo 2-9698.

†NEW JERSEY, NORTH ARLINGTON, 32M Garden Terrace, Joseph Logisic, Tel. 991-8211.

†NEW JERSEY, RUTHERFORD, 246 Sylvan St., Richard W. Whitson, Tel. Geneva 8-2178.

NEW JERSEY, WEST BERLIN, P.O. Box 26, Frank A. Neff, Tel. 767-4350.

NEW YORK, LATHAM, 57 Sylvan Ave., Clarence A. Wheeler, Tel. State 5-6371.

★NEW YORK, NEW YORK 1, 370 7th Ave., (Penn Terminal Bldg.), Clarence L. Rosenquist, Mgr., Tel. Chickering 4-8800.

NEW YORK, ROCHESTER, 14 Strathmore Circle, James Halbach, Tel. LI 4-1882.

†NEW YORK, ROCHESTER 9, A. J. Adams Co., 1051 Culver Rd., Tel. BUtter 8-7250.

NEW YORK, UNIONDALE, 873 Henry St., Anthony Candell, Tel. Ivanhoe 3-7477.

NORTH CAROLINA, GREENSBORO, P.O. Box 226, William D. Harrod, Tel. 299-9367, 4216 Pennydale Dr., Harold E. Miller, Tel. 292-0734.

OHIO, CLEVELAND, 4914 Pearl Road, Cut & Sew Equipment Co., Tel. 661-5901.

OHIO, COLUMBUS, P.O. Box 874, Larry Kelson, Tel. AXminster 1-1222.

OKLAHOMA, OKLAHOMA CITY 19, 2226 Southwest 53rd St., G. B. Wiley, Tel. 685-2836.

PENNSYLVANIA, ALLENTOWN, P.O. Box 542, Luther D. Cassell, Tel. 797-2111.

PENNSYLVANIA, BETHLEHEM, 1212 Camac St., Ed Deegan, Tel. 868-8204.

PENNSYLVANIA, BERWICK, 1013 E. 16th St., Donald McFadden, Tel. 752-2442.

PENNSYLVANIA, CLARK'S SUMMIT, 428 West Grove Ave., John J. Laffer, Tel. JUNiper 7-2820.

★PENNSYLVANIA, PHILADELPHIA 24, 4234 Macalester Ave., Ben W. Merz, Mgr., Tel. Gladstone 5-9800.

†PENNSYLVANIA, NEW ALEXANDRIA, (Pittsburgh) P.O. Box 285, W. Dale Speer, Tel. (Pittsburgh) 563-3589.

PENNSYLVANIA, REAMSTOWN, P.O. Box 176, David M. Bender, Tel. 267-6109.

PENNSYLVANIA, YORK, P.O. Box 884, Harding T. Powell, 854-8040, also A. C. Davis.

SOUTH CAROLINA, COLUMBIA, P.O. Box 4246, Virlyn R. Crisler, Tel. Sunset 7-0863, P.O. Box 4112, J. W. Carter, Tel. 254-4255.

SOUTH CAROLINA, GREENVILLE, 25 Sir Abbot St., Orville W. Gregory, Tel. Cedar 9-5539, Lewis Village, Apt 9-E, John Lawrence, Tel. 235-2213.

TENNESSEE, KNOXVILLE 19, 3905 Greenleaf Ave., Horace E. Clinard, Tel. 588-1865.

TENNESSEE, MEMPHIS 17, 4695 Dunn Rd., Richard J. Lindhorst, Tel. Mutual 5-6750.

TENNESSEE, NASHVILLE 12, 1602 South Observatory Drive, William J. Brauch, Tel. Cypress 2-5123, 2517 Woodberry Drive, F. M. Blunkall, Tel. 883-3352.

★TEXAS, DALLAS 19, 4200 Hines Blvd., P.O. Box 6727 J. H. Muir, Mgr., Tel. Lakeside 6-8369.

TEXAS, CARROLLTON, 1404 Fannidella, John D. Troeger, Tel. CH 2-5309.

TEXAS, EL PASO, P.O. Box 9573, Edward E. Smith, Tel. 598-2928.

TEXAS, SAN ANTONIO, Jerry Gregory, P.O. Box 13126, Tel. DI 2-5924.

UTAH, SALT LAKE CITY, 1215 E. 13th South St., Larry F. Rosvall, Tel. IN 7-6931.

VIRGINIA, LYNCHBURG, P.O. Box 1075, Tom Traylor, Tel. 845-8901, also Gerald Morrison.

WASHINGTON, SEATTLE, 858 South 148th, Louis Spencer, Tel. MA 4-8083.

### CANADA

Union Special Machine Co. of Canada, Ltd.

BRITISH COLUMBIA, N. BURNABY 2, James Murray, 1522 Madison Ave., Tel. MU 3-3917.

MANITOBA, WINNIPEG 2, Frank Thierman, Rm. 201, Whitehall Bldg., 70 Arthur St., Tel. Whitehall 3-4933.

★ONTARIO, TORONTO 28, Peter Fowler, Mgr.-Rep., 355 King St. West, Tel. Empire 6-2939.

★QUEBEC, MONTREAL 10, John Caschetto, Mgr.-Rep., 40 Molire St., Tel. 276-2575.

**FINEST  
QUALITY  
WORK**

**HIGHEST  
PRODUCTION  
RATES**

**LOWEST  
MAINTENANCE  
COSTS**

**Sales Agents For UNION SPECIAL Machines;  
Also Agent for (L) LEWIS and (C) COLUMBIA where marked.**

**AFRICA**

(TEXTILE & BAG MAKING MACHINES) Berzack Bros., Ltd. REPUBLIC OF SOUTH AFRICA—JOHANNESBURG—135/7 Pritchard St. CAPE TOWN—78 Darling St. DURBAN—72/74 Commercial Road. PORT ELIZABETH—277 Main Street. RHODESIA, BULAWAYO—133 Fife St. SALISBURY—102 Sinica St. (L)

(BAG CLOSING MACHINES) South African Scale Co. Pty., Ltd. REPUBLIC OF SOUTH AFRICA—JOHANNESBURG—32 Von Brandis St. BLOMFONTEIN—53 Zastron St. CAPE TOWN—Wales and Bree Sts. DURBAN—22 Aliwal St. EAST LONDON—38 Argyle St. LADYSMITH, Natal—355 Murchison. PORT ELIZABETH—Box 611. Also at PIETERMARITZBURG, PRETORIA, VEREENGING and WORCESTER. RHODESIA, BULAWAYO—2 Leander House, Rhodes Street. SALISBURY—95 Victoria Street, ZAMBIA—KITWE—Blantyre Road.

ALGERIA, ALGIERS—Etab. Sayag, 8 Rue Altairac.

ETHIOPIA, ASMARA—S.A. Calderoni Africa, Avenue P. Asfaha Woosen (L & C)

IVORY COAST—ABIDJAN—Ets. Jean Abite-Gal, Box 1798. (L & C)

KENYA, NAIROBI—Transcandia, Ltd., College House, Koinange St. (P.O. Box 5933) (L & C) (Also Uganda, Tanganyika and Zanzibar)

MALAGASY REPUBLIC—TANANARIVE—Soc. Ind. Et Com. De L'Emyrne, Boite Postale 1078, 17 Rue Clemenceau (L & C)

MAURITIUS, PORT LOUIS—(Bag Closing & Bag Making Machines) Hall, Geneve, Langlois, Ltd., 42 Sir William Newton St.

MOROCCO, CASABLANCA—R. Geissmann & Fils, Rue El Idricci Es Sakali (L)

NIGERIA, APAPA, LAGOS—Sunflag Knitting Mills (Nigeria) Ltd. 9 Warehouse Road. (L & C)

SUDAN, KHARTOUM—Franco Pinto (Sudan) Ltd., P.O. Box 305. (L & C)

TUNISIA, TUNIS—Comptoir Industriel & Menager, 8 Rue du 18 Janvier 1952 (L)

**ASIA**

CAMBODIA, PHOM-PENH—Denis Freres, 219 P.B. Sisowath, P.O. Box 48. (L & C)

HONG KONG—G. R. Coleman Co. (Hong Kong) Ltd., Rm. 305, Wing Ting Building, 7-13 Wellington St.

INDIA, CALCUTTA—Patrol Sewing Machine (P.) Ltd. 9/1 Savaram Bysack St. (L & C)

JAPAN, OSAKA—Kondo Sewing Machine Co. 163. Umegoe-cho Kita-ku. (L) Branch—Tokyo 6-3 Ginza, Choo-Ku. Also at: Ashikaga, Fukui, Nagoya, Niigata, and Okayama.

KOREA, SEOUL—Uebersee-Handel A.G., Rm. 604, Bando Bldg. 180 1-ka Ulchiro; Chung-Ku, Int. P.O. Box 1268. (L)

LAOS, VIETIANE—Denis Freres, P.O. Box 133. (L & C)

PAKISTAN, (WEST) KARACHI—Universal Trading Corp., 29 Zeenat Mansion, Mead Road. (EAST) (Bag closing and bag making machines) Thomas C. Keay, Ltd., 15 Baltic Street, Dundee, Scotland.

REPUBLIC OF CHINA, TAIWAN, TAIPEI—G. R. Coleman Co. (Taiwan) Ltd., 16 Nan Yang St. (L & C)

THAILAND, BANGKOK—Yip In Tsoi & Co., Ltd., P.O. Box 23. (L & C)

VIETNAM, SAIGON—S.A. Pour Le Riz et L'Industrie (Sar) 147 Trinh Minn-The (B. P. 444) (L & C)

**AUSTRALIA**

SOLE DISTRIBUTORS: Capron, Carter Pty., Ltd., 86 Liverpool Street, SYDNEY. Branches at: BRISBANE—454 Brunswick St., Valley, N.T. MELBOURNE—154 A'Beckett St. AGENTS: SOUTH AUSTRALIA—ADELAIDE—William Charlack Ltd., London Road, Mile End. WESTERN AUSTRALIA—PERTH—Thomson's Pty. Ltd., 789 Hay St. TASMANIA—LAUNCESTON—Sew Knit Pty. Ltd., 72-74 George St. (L & C)

**EUROPE**

AUSTRIA, VIENNA—Firma Naeschuster, Mariabillerstr. 51, (L)

BELGIUM, BRUSSELS—Union Special Machine Corporation of America, 90 Rue de la Caserne, Gustave Thierie, Mgr. (C)

DENMARK, COPENHAGEN—Rothenborg Specialmaskiner for Sy-Industri A/S, Nikolaj Plads 23. Offices at: AALBORG, HERNING, KOLDING, ODENSE, RISSKOV-AARHUS AND SILKEBORG. (L & C)

FINLAND, HELSINKI-LAUTTASARI—Suomen Koneilike O/Y, Vattunienkatu 13. Branches at TAMPERE-Pienteollisuus-talo, TURKU, Humalistenkatu 7-B. (L & C)

FRANCE, PARIS—Cie. des Machines Union Special de France, 91 Ave. de la Republique—Thos. de Semlyen, Directeur, Branch at: ROUBAIX (NORD)—50 Ave. J. Lebas. LYON, VILLEURBANNE (RHONE) 58 rue Alexandre Boutin. TOULOUSE (HAUTE GARONNE) 12, Bd. Montolaisir.

GERMANY, STUTTGART—Union Special Maschinenfabrik, G.m.b.H., Schwabstr. 33—A. W. Krieger, Managing Director. Th. M. Baanstra, Director of Sales, BRANCHES AT: BERLIN, BIELEFELD, EMBINGEN, FRANKFURT, HAMBURG, KOLN, MUNCHEN, OCHTRUP.

GREAT BRITAIN—(Textile Machinery)—ENGLAND—OADB Y (NR. LEICESTER)—Union Special Machine Company, Ltd., Mandervill Road, Industrial Estate, Mr. A. B. Fitzpatrick, Manager. LONDON—108 City Road (H. O. Hall, Manager). SALES OFFICES: BRISTOL, L. J. Heard, 19 The Rides, Kingswood. SCOTLAND, MILNGAVIE (GLASGOW)—Derrick R. Robinson, 48 Clochar Avenue. SUB-AGENTS: LONDON, W. 1—G. Johnson & Son (Sewing Machinery), Ltd., 58 Great Titchfield Street. MANCHESTER 19—S. A. Smith, (Manchester) Ltd., Park Grove Works, Levenshulme. NORTHERN IRELAND—BELFAST 15, Aktes Ltd. 186 Cavehill Road. SCOTLAND, GLASGOW S.E.—Allardice & Co., 9 Stevenson Street. (C) (Bag Closing and Bag Making Machines) SCOTLAND, DUNDEE—Thomas C. Keay, Ltd., 15 Baltic Street—Agent for entire British Isles.

GREECE, ATHENS—Georges Yannakouras-Dimoulis, 30 Petraki St. (L & C)

ICELAND, REYKJAVIK—Magnus Thorgerisson, Skolavordustig 1a (L & C)

IRELAND, DUBLIN—(Textile Machines) W. Blythman, 224 Parnell Street (L & C) (Bag Closing and Bag Making Machines) Thomas C. Keay, Ltd., 15 Baltic St., Dundee, Scotland.

ITALY, MILANO—Giovanni Confi & Nipoli, Via Varese 18. (L & C)

MALTA, VALLETTA—A. C. Wismayer & Co., Ltd., 62 Old Bakery Street. (L & C)

THE NETHERLANDS, AMSTERDAM—N. V. Machinehandel C. & H. Verbeek, Kloveniersburgwal 77. Offices at: ARNHEM, ENSCHEDE, GRONINGEN, ROTTERDAM, SITTARD, TILBURG. (L & C)

NORWAY, MANGLERUD—Jac. Jacobsen A/S, Enebakkveien 117, BERGEN—Bjornsonstg 24. (C)

PORTUGAL, OPORTO—Rost & Jenuis, Succs. Lda., Rua Barao de Forrester 914. (L)

SPAIN, BARCELONA—Rapida, S.A., Via Layetana 37 (L)

SWEDEN, BORAS—Rud. Nyström & Co., A/B, Lilla Bran-nerrigatan 6. Branches at OREBRO—Stordagatan 37-39, MALMO, S. Forstadsgratan 16. Sub-Agent STOCKHOLM, 4/B Forsberg & Kata, Tomtebgatan 38.

SWITZERLAND, URDORF (ZH)—Bourquin & Cie., Vegetaust. (Postfach). (L-Button Sewer)

**LATIN AMERICA**

Union Special International, Inc.

ARGENTINA, BUENOS AIRES—IROMAC S.A.C., Division Pamaco Costura, S.A., San Jose 350. (Union Special Machine Company), (L & C)

BRAZIL, SAO PAULO—Pancostura S.A.—Industria e Comercio, Rua Aurora 59A-71. Branches at PORTO ALEGRE—Rua Voluntarios da Patria 533; RECIFE—Rua Princesa Isabel 105; RIO DE JANEIRO—Rua Alexandre MacKenzie 117. (C & L)

CHILE, SANTIAGO—Lowenstein & Stewart, S.A.C., Calle Santa Domingo 1140. (L & C)

COLOMBIA, BOGOTA—Macalzado, Ltda., Carrera 30 #12-99. Branches at BARRANQUILLA—Carrera 45-B #34-54. BUCARAMANGA—Calle 34 #17-45. CALI—Carrera 7 #13-33/35. MANIZALES—E. Breslau, Carrera 22 #18-44. MEDELLIN—Carrera 51, 36-18, PERELRA—Cra. 8—#22-77. (L & C)

COSTA RICA, SAN JOSE—Enrique Rodriguez S., P.O. Box 1949. (L & C)

DOMINICAN REPUBLIC, SANTA DOMINGO—Roberto Dominquez, G., Calle Dr. Pedro Urena 19. (L & C)

ECUADOR, GUAYAQUIL—Distribuidora Richard O. Custer, S.A., Malecon Simon Bolivar #2308. Branch at QUITO—Avenida Patria 768. (L & C)

EL SALVADOR, SAN SALVADOR—Vairo Hermanos, Colonia Vairo. (L)

GUATEMALA, GUATEMALA—Compania Agro Comercial, S.A., 8a Avenida Sur Zona 1. (L & C)

HONDURAS, SAN PEDRO SULA—Jacoba E. Handel, P.O. Box 559 (L & C)

MEXICO, MONTERREY, N.L.—Talleres Perez Zozayo, S.A. de C.V., Cuauhtemoc Norte 335. Branches at: GUADALAJARA, JAL.—Hidalgo 45 y 47; MEXICO, D.F.—Distribuidora Union Especial, S.A. de C.V., Ave. Pino Suarez 99a (Apartado 28070); SAN LUIS POTOSI, S.L.P.—J. de los Reyes 80. (L)

NICARAGUA, MANAGUA—Casa Hentgen, 3A Calle N.O. #303. (L)

PANAMA, PANAMA—Agencias Hagus, S.A., Ave. 7A Espana #45.

PERU, LIMA, Breña—United Agencies, S.A. (Peru) Av. Alfonso Ugarte 1445-1447. (L & C)

PUERTO RICO, SAN JUAN—Abarca Warehouse Corp., P.O. Box 2352. (L & C)

SURINAM, PARAMARIBO—Kipralani's, Ltd., 17-27 Maagden St. (L & C)

URUGUAY, MONTEVIDEO—Storer & Cia., S.A., Uruguay, Mercedes 1312. (L)

VENEZUELA, CARACAS—H. Blohm, S.A., Dr. Paul A. Chorro 29.

**NEAR EAST**

CYPRUS, NICOSIA—Christodoulides Bros. & Co., 94 Tri-couppis St. (L)

IRAN, TEHRAN—Sava Trading Corp., Ave. Bazarjamehri 881. Seray Saadihy. (L & C)

IRAQ, BAGHDAD—Sons of O. O. Agopian (IRAQ), P.O. Box 2021, Aliwyah. (L & C)

ISREAL, TEL AVIV—L. Taube, Ltd., 15 Lilienblom St. (L)

JORDAN—Bandar & Aracting, B.P. 1144—Damas, Syria (L & C)

LEBANON, BEIRUT—Sons of O. O. Agopian, P.O. 1165. (L & C)

SYRIA, DAMAS—Bandar & Aracting, B.P. 1144. (L & C)

TURKEY, ISTANBUL—M. Benmayor, Mahmutpassa Abut Efendi Han Nr. 46-47. (L & C)

U.A.R., CAIRO—Mist Import & Export Co., 6 Rue Adly—Tech. Sub-Agent—A. Kavaldjian, S.A.R.L., 200 Sharia Shubra. (L & C)

**NEW ZEALAND**

SOLE DISTRIBUTOR: H. A. Tuck & Co., Ltd., 171 Albert St. AUCKLAND. BRANCH AT: WELLINGTON, Lees Bldg., Nelson St. (L) Also—New Caledonia, Cook Islands, Ellice Islands, Gilbert Islands, New Hebrides, Samoa (American), Tahiti, and Tonga. SUB-AGENTS: Glendernid, Ltd., CHRIST-CHURCH—90 Orbell St. DUNEDIN—192-196 Castle St., P.O. Box 40. (C) FIJI SUVA—Karl R. Fleischman, P.O. Box 602. (L) SAMOA (WESTERN), APIA—S. C. Percival, P.O. Box 204. (L)

**PACIFIC ISLANDS**

HAWAII, HONOLULU—(Textile Machines) Territorial Sales Co., 508 Atkinson Drive. (L) (Bag Closing and Bag Making Machines) H. S. Gray Co., 759 Puuloa Rd.

PHILIPPINE ISLANDS, MAKATI, RIZAL—Akins, Kroll & Co., Inc., 313 Malugay Street, (Buendia Extension), Branch at CEBU. (L & C)

**WEST INDIES FEDERATION, JAMAICA**

Union Special International, Inc.

JAMAICA, KINGSTON—Morris E. Parkin, 96 King St. (L)

TRINIDAD, PORT OF SPAIN—Ackrill & Co., 17 Henry St. (L & C) Also—BARBADOS, GRENADA, TOBAGO.

**Additional Sales Agents for (L) LEWIS and (C) COLUMBIA Machines**

1-66

AUSTRIA IV, VIENNA—Franz Koerpert & Sohne, K.G., Wiedner Hauptstrasse 36. (C)

BELGIUM, BRUSSELS—N. V. Machinehandel C & H Verbeek, Kruidentuinlaan 57a, Bayl Bldg. (L)

FRANCE, PARIS—Societe G. Arnon & Cie., 14 Rue Commines (L) —Aspe-Dumont & Cie., 13 Rue de la Fontaine-Au-Roi. (C)

GERMANY, KREFELD—Herbert Janssen, Alte Linnerstr. 104 (C. tie mach.)

GREAT BRITAIN—ENGLAND, LONDON, E.C.2—Eastman Machine Company, Ltd., 128-132 Curtain Road. CROY-DON, 89 Beddington Lane, LEEDS—60 Merriion Street. MANCHESTER, 105-107A Corporation Street. SCOTLAND, GLASGOW S2—11 Drumrooch Place, Torvglen. NORTHERN IRELAND, BELFAST 14—W. F. Maxwell, 50 Glenbryn Park. REPUBLIC OF IRELAND, DUBLIN—Wm. Blythman, Ltd., 223/4 Parnell Street. (L)

ISRAEL, TEL AVIV—Israel Sewing Machine Co., 22 Yehudo Halevy St. (C)

MEXICO, MEXICO, D.F.—Casa Diaz de Maquinas de Caser, Av. Republic del Salvador 89-93 (C)

MOROCCO, CASABLANCA—Durkopp Coudrex, 25 Rue Bascu-nana. (C)

NORWAY, OSLO—J. A. Johansen A/S, Torvgatan 10. (L)

REPUBLIC OF SOUTH AFRICA, JOHANNESBURG—African Sewing Machine Company (Pty.) Ltd., 118 President Street. Branches at: CAPE TOWN—110 Plein St.; DURBAN—9 New Miester Lane (C)

RHODESIA, FEDERATION OF RHODESIA & NYASALAND, BULAWAYO—African Sewing Machine Company (Rhodesia) (Pvt.) Ltd., 2 Leonidas House, 138 Rhodes Ave.

SPAIN, BARCELONA—Arbis S/A, Gerona 63. (C)

SWEDEN, BORAS—Husgvarna, Industrismaskiner A/B—Katrineholmsgatan 13. Branches: GÖTEBORG—Stigbergsgatan 1 MALMO—Isak Skokaregatan 9—OREBRO—Stortorget 19—STOCKHOLM—Brunnsgatan 6-8. Agents—ULRICHAM—Firma Hjalmar Svensson, Tingshussgatan. (C)

SWEDEN, BORAS—A/B, A. C. Gustafson, Skolgatan 30, Branches: MALMO—Svedsgatan 14, STOCKHOLM—Kungs-gatan 18 Ulricham-Hojdgatan 20. Sub-Agent—GÖTEBORG—Symaskinsverkstaden special, Kungshojssgatan 7. (L)

SWITZERLAND, ZURICH—Fritz Zellweger & Sohne, Sei-naustr. 27. (L, except Button Sewer) Guttinger A.G., Sihlstrasse 37. (C)

URUGUAY, MONTEVIDEO—C. Brandes & Cia., S.A., Calle Rincan 658-60. (C)



*Union Special*<sup>®</sup>  
INDUSTRIAL SEWING MACHINES

UNION SPECIAL maintains sales and service facilities throughout the world. These offices will aid you in the selection of the right sewing equipment for your particular operation. Union Special representatives and service men are factory trained and are able to serve your needs promptly and efficiently. Whatever your location, there is a Union Special Representative to serve you. Check with him today.

ATLANTA, GA.

BOSTON, MASS.

CHICAGO, ILL.

DALLAS, TEXAS

LOS ANGELES, CAL.

NEW YORK, N. Y.

PHILADELPHIA, PA.

MONTREAL, QUEBEC

BRUSSELS, BELGIUM

LEICESTER, ENGLAND

LONDON, ENGLAND

PARIS, FRANCE

STUTTGART, GERMANY

Representatives and distributors in all important  
industrial cities throughout the world.

*Union Special*  
MACHINE COMPANY

400 N. FRANKLIN ST., CHICAGO, ILL. 60610